



Aba Daba Rents

4351 Auburn Blvd.
Sacramento, CA 95841-4152
(916) 484-7368 Fax (916) 482-2552
www.abadaba.com

Nacho Cheese Sauce

Pouch Handling

- Unopened pouches may be stored at room temperature.
- Heat pouch in dispenser for a minimum of 4 hours or until pouch reaches 140°F before opening.
- An open pouch must be maintained at 140° F minimum at all times
- Shelf life of an opened pouch is 5 days if maintained at 140° - 160° F.

Pouch Preparation

1. Remove preheated pouch from dispenser upper warming tray.
2. Lift the ring and pull the dust cover from the fitment.
3. Remove tube/piercer assembly from plastic bag and insert piercer into fitment.
4. Rotate piercer clockwise while pushing in so that the piercer punctures the seal membrane inside the fitment.
CAUTION, cheese sauce is HOT!
5. Grasp fitment firmly and thread piercer cap fully onto fitment.
6. **DO NOT** insert piercer with the fitment lying flat on the table or with the pouch folded over behind the fitment. This may allow the piercer teeth to cut through the outer wall of the pouch.

Pouch Preparation # 2



Pouch Preparation #3 & #4



Pouch Preparation #5



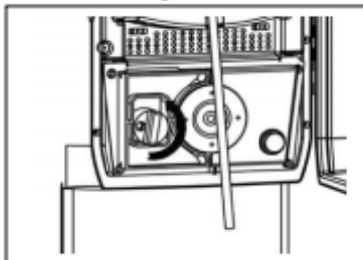
Pouch Preparation #6



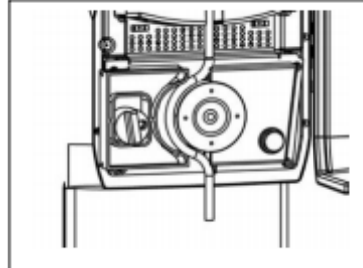
Pouch Loading

1. Open dispenser door and remove upper warming tray.
2. Place preheated pouch in lower tray with pouch fitment protruding down through the hole in front of tray.
3. Open tube clamp by rotating cam counterclockwise
4. Guide tube through the pump slot from top to bottom.
5. Close the clamp by rotating the cam fully clockwise.
6. Place unopened pouch in upper warming tray to preheat and place tray in dispenser.
7. Close the door.

Pouch Loading #2 & #3



Pouch Loading #4



Pouch Loading #5

